



 A BRIARWOOD COMPANY



# EUROSIX: Cladding structures

The UK's only British farmer owned  
fibre cement roofing manufacturer



Search for **Briarwood**



# EUROSIX: Great Britains highest-quality fibre cement sheet





## TABLE OF CONTENTS

- 4. EUROSIX technical data
- 5. Qualities and guaranties
- 6. Installation and guidance

**Not sure exactly what you need?  
Speak to our technical department.**



# EUROSIX

Briarwood is a reputable manufacturer known for producing high-quality EUROSIX fibre cement sheets. These sheets have gained recognition as the optimal roofing and cladding solution for a wide range of structures, including agricultural, industrial, commercial, and domestic buildings. While many designers prefer EUROSIX as their roofing sheet of choice, it can also serve as a viable cladding solution, regardless of the roofing material used.

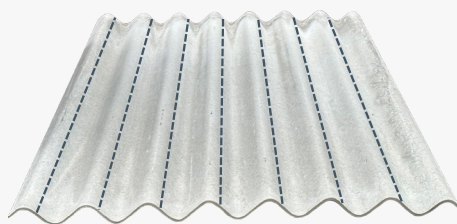
The EUROSIX fibre cement sheets are composed of a combination of cement and plant fibers, resulting in a product that is exceptionally strong and durable. This unique composition not only ensures long-lasting performance but also facilitates natural ventilation within the building. The sheets allow for the free flow of fresh air, preventing the build-up of condensation and maintaining a comfortable environment.

EUROSIX sheets are available in a natural grey color, which blends well with various architectural styles. Additionally, the sheets are offered in six standard colors, providing options to suit different design preferences. For those seeking a more customized appearance, Briarwood also accommodates requests for custom colors, allowing for even greater design flexibility.

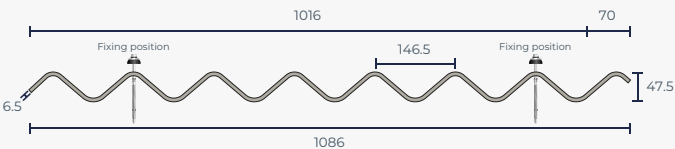
Apart from their aesthetic appeal and functional advantages, EUROSIX sheets come with a host of certifications and guarantees. The product is accredited by the BBA Safety Standards and covered by CE Certification, ensuring compliance with industry standards and regulations. Moreover, Briarwood stands behind the quality of their product by offering a 30-year manufacturer's guarantee, providing customers with peace of mind regarding the long-term performance and durability of the sheets. Furthermore, the color sustainability of EUROSIX is guaranteed for 10 years, assuring that the vibrant hues will endure over time.

To enhance strength and durability, the sheets are reinforced with polypropylene strips integrated along each corrugation. This reinforcement adds an extra layer of robustness, ensuring that the EUROSIX sheets can withstand various weather conditions and maintain their structural integrity even in challenging environments. With its blend of durability, aesthetic appeal, and certifications, EUROSIX fibre cement sheets from Briarwood present an ideal roofing and cladding solution for diverse construction projects.

## EUROSIX technical specifications



EUROSIX is a strong fibre cement sheet reinforced with polypropylene strips that have been inserted in specific locations which run along the entire length of the sheet; thus providing maximum impact strength without negatively affecting the look, durability and practicability of the product.



### TECHNICAL DATA

Overall width	1086 mm
Cover width	1016 mm
Thickness	6.5 mm
Corrugation pitch	146.5 mm
Depth of profile	47.6 mm
Side lap	70 mm
Minimum end lap	150 mm
Minimum roof pitch	5°
Maximum unsupported overhang	350 mm
Standard colour	Natural grey
Class	C1X
Maximum purlin centres	1375 mm
Maximum rail centres	1825 mm
Approx.weight when installed	17kg/m2

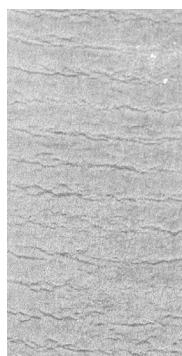




## WHY INVEST IN EUROSIX?

- 30 year manufacturers guarantee
- Highest quality fibre cement roofing in Britain
- Perfect for cattle and dairy farming, equestrian centres and agricultural sheds
- Minimises condensation
- High resistance to corrosion
- Excellent acoustic insulation
- Low thermal conductivity reduces heat build-up in the summer and prevents heat loss in the winter
- Class 1 fire rated
- UKCA mark approved
- Manufactured to BS EN ISO 9001 standards
- Complies with BS EN 494 requirements for Class 1X sheeting
- Fully BBA Certified
- Wide range of accessories

### NATURAL COLOUR



NATURAL GREY

### MEADOWSCAPE



MEADOWSCAPE

### STANDARD COLOUR RANGE



JUNIPER GREEN



VAN DYKE BROWN



SLATE BLUE



BEAVER BROWN



MOORLAND GREEN

## Quality and sustainability

Briarwood's EUROSIX fibre cement sheets conform to BS EN 494: 2004 Class C1X and are covered by an EN standard, UKCA and CE Mark. We adhere to ISO 9001 (Quality) and ISO 14001 (Environment) standards.

Briarwood offer a 30-year manufacturer's guarantee on all fibre cement sheets and a 10-year colour guarantee on all painted fibre cement sheets.



## RIDBA approved member

The Rural and Industrial Design and Building Association (RIDBA) is the leading trade association for the modern agriculture and industrial buildings industry in the UK. Briarwood Products are a proud member of the RIDBA association.

## Our factory to farmer guarantee

Briarwood understands the dedication and financial investment demanded by your farm, which is why we place great value on providing you with a sense of security. Count on our assurance of quality to meet your needs.

## BBA Agrément Certificate

BBA Agrément Certificate is a mark of excellence based on rigorous national and European standards that validate a construction product's specialist formulation, capability and uniqueness. Briarwood's EUROSIX fibre cement sheets and accessories (bargeboards, ridges and others) have all been awarded the BBA Agrément Certificate. Our certificate is available to view upon request if required when specifying projects.



# Installation and guidance

## Design and specification

Before beginning the installation process, carefully design the specifications for the areas where cladding is desired. Ensure that you have appropriately determined the number of EUROSIX fibre cement sheets required, along with their respective lengths. Take into consideration the layout format you would use if the sheets were being installed as a roof.

## Fixing methods

There are two main fixing methods for installing the fibre cement sheets as exterior cladding: the topfix method and the valley fixing method.

### TOPFIX METHOD

When using topfix fasteners to fix vertical sheeting, additional support is required due to the weight of the sheets. This support is necessary to prevent sagging of the sheets and over-stressing both the sheets and the fasteners. To provide support at the base of each sheet, use support clips that hook over the sheeting rail. These support clips help maintain the integrity of the installation and hold the sheets securely in place.

### VALLEY FIXING METHOD

The valley fixing method is an alternative approach that does not require support clips. This method involves fixing the sheets through the valley corrugations. However, it is important to note that the valley fixing method should not be used below eaves bend sheets. When using the valley fixing method, ensure that the fasteners are positioned with a 2mm oversize hole pre-drilled through the sheet, allowing for proper expansion and contraction of the material.

## Mitring

When using EUROSIX fibre cement sheets for cladding, mitring is still required on the appropriate sheets. This is done to avoid the build-up of four layers and to ensure that the top layer fits flush against the other sheets, providing a clean and seamless appearance.

See page on the right for more advice.

### TOPFIX METHOD

Clip fabricated from galvanised steel bar

Topfix fastener on crest of corrugation  
2 per sheet

Support clip used on  
trough of corrugation 2  
per sheet

### VALLEY FIXING METHOD

Valley fixing positions for vertical construction



# Mitring plan

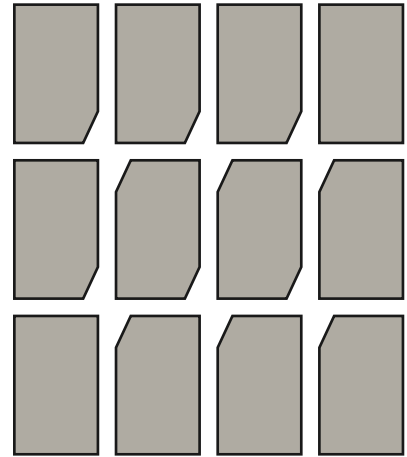
To ensure that all fibre cement sheets lay in the same plane, it is required that two of the sheets at each junction is mitred at the corners which will avoid four layers of sheets stacking.

The mitres should be cut 150 mm (or up to 300 mm depending on the overlap) up the vertical edge of the corner, and then 70 mm along the horizontal edge.

Briarwood recommend that the gap between the mitres should be 3 to 6 mm.

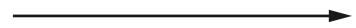
The mitred joint is covered on the top and the bottom by the two other fibre cement sheets which allows the sheets to be fixed ensuring that the product is weatherproof and unseen.

Top of the wall



Bottom of the wall

Lay left to right



Mitres must be on the opposite hand when laying right to left

## VISUAL REPRESENTATION OF MITRE

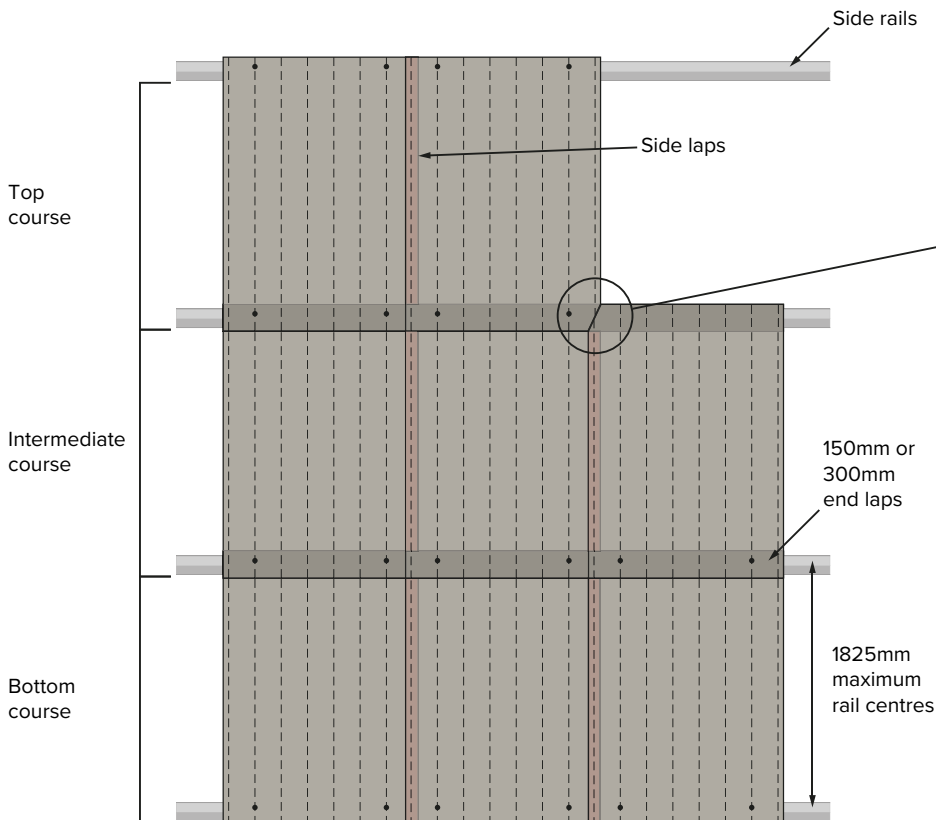
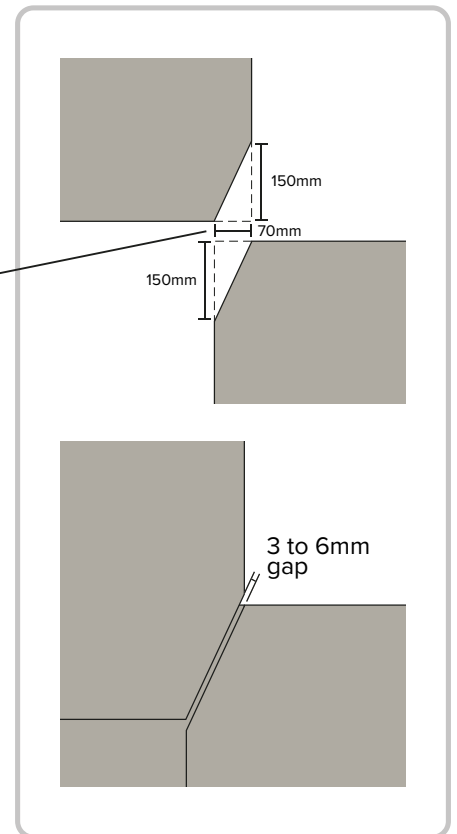
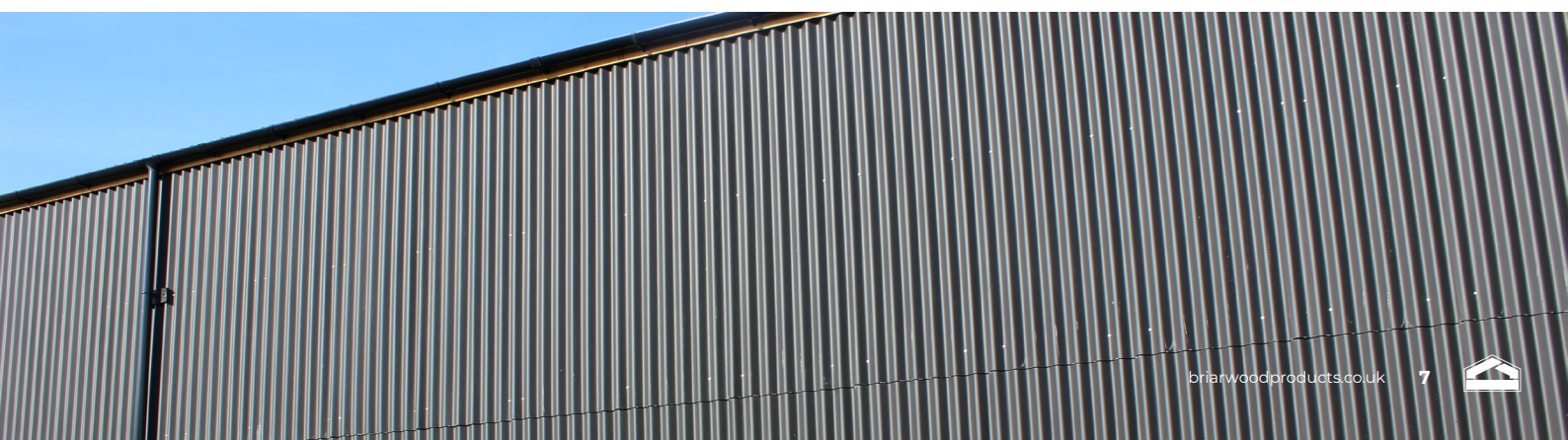


Diagram showing 1525mm EURO SIX fibre cement sheets



FOLLOW US



CONTACT US

8:30 - 17:00 Mon - Fri  
01934 641446  
sales@briarwoodproducts.co.uk



Approved by

